

2020 Land Rover Discovery Sport D180 SE

2.0L Diesel 9-Speed AT 180bhp 5-Seater

SE



STOCK#:LH868637

Available

MILEAGE	24Mi (38.616) Km	ENGINE	2,000cc
TRANSMISSION	AT	BODY STYLE	SUV
DRIVELINE	AWD	FUEL TYPE	Diesel
RHD / LHD	LHD	INCOTERMS	
EMISSIONS	053CT EU6d Dsl Temp Emission	LOCATION	Antwerp Belgium AET
INTERIOR COLOR		EXTERIOR COLOR	Orange
CYLINDERS	4	TITLE TYPE	Inhouse Certificate of Origin

Description

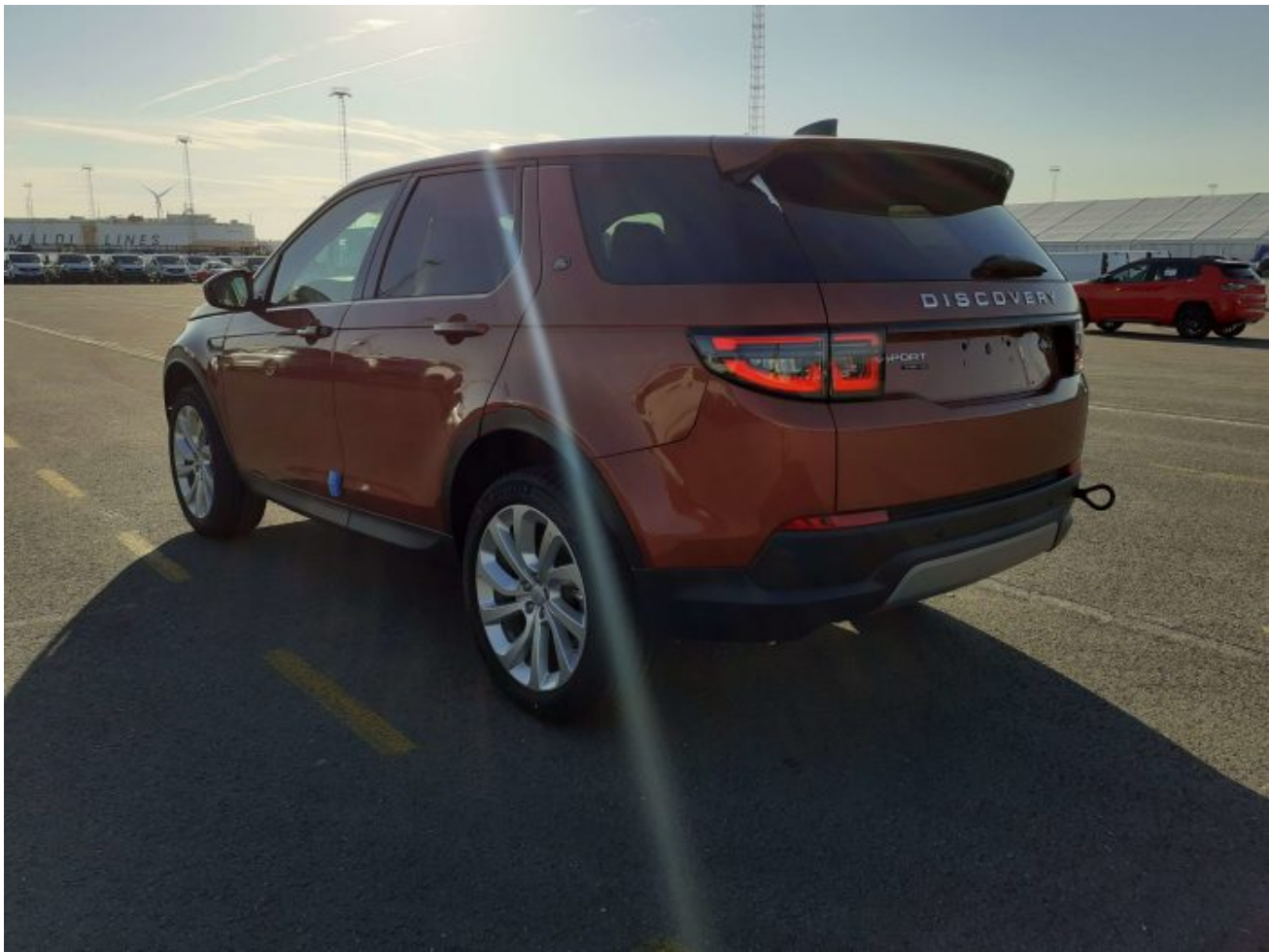
Sales Description: 2020 Land Rover Discovery Sport D180 SE 2.0L Diesel 9-Speed AT 180bhp 5-Seater

. Market Restriction: EU,NAFTA & Restricted Countries,UK. Equipment: 20" Style 5089 Wheels, Cold Climate Pack, Fixed Panoramic Roof, Connected Navigation Pro, Meridian™ Sound System, Leather steering wheel with Atlas Bezel, Traffic Sign Recognition and Adaptive Speed Limiter, Wireless device charging, Heated Front Seats, 12-way heated, electric memory front seats with 2-way manual headrests, Premium LED headlights with signature DRL, Summer Tyres, Auto-Dimming Interior Rear View Mirror, Front Seat Lumbar - 4 Way, Privacy glass, Leather gearshift, SE badge, Light Oyster Headlining NA, 5 seats, Driver and passenger seat memory, Seat Cushion Power Fore/Aft, Seat Cushion Power Height, Seat Cushion Power Tilt, Seat Squab Power Recline, Heated Steering Wheel, Heated Windscreen, Heated Washer Jets, Headlight power wash, Carpet Mats, Gloss Black Trim Finisher, Manual slide and recline second row seats, Trim level 2, Front passenger seat ISOFIX, Heated, electric, power fold door mirrors with approach lights and auto-dimming driver side, Interactive Driver Display, SPORT badge in Silver, Emergency Braking, Powered Tailgate / Boot Lid, Blind Spot Assist, Nav - Reg 1 Europe, Connected Navigation Data, Online Pack, Automatic Headlight Levelling

More Images

















10:59

(P)

13°C



Press OK to clear



0000

000024 km

0 km

0000